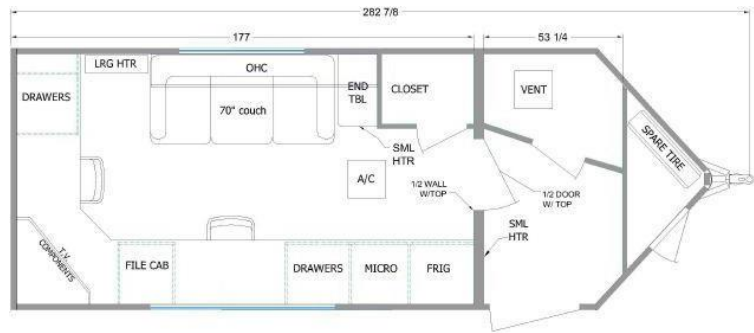




WEIGHT	5330LBS
LENGTH	28'1" (hitch to bumper)
SIZE	100" wide / 78" ceiling
EXTERIOR	Gel-coat exterior siding
INSULATION	Walls R10/ Floors R21/ Ceiling R14



- Wood Construction: walls, floor, roof
- Steel fenders attached to chassis
- 4- 24" manual stabilizer jacks
- 8000LB Ram manual hitch jack
- 2 5/16" 14K 5 position adjustable bull dog coupler
- Mud Flaps
- Fully Enclosed Underbelly
- 2" Bonded side walls
- 2" foam insulation; Walls R10
- Fiberglass insulation; Wall, Floor & Ceiling
- 2- insulated tinted black radius windows
- All weather rubber roof
- Front V- Nose w/ ATP stone guard
- 20" X 33" insulated front storage door
- Rear Black Ladder
- 30 amp 240V electric service
- 30 amp twist lock plug
- 240 V/ 50 amp surge guard with remote digital display
- Prep for satellite
- LED clearance / running lights

- 2- 2000 w electric heater separately controlled
- 1- 3000w electric heater separately controlled
- 4.4cf stainless steel fridge
- 1.0cf stainless steel microwave
- 13.5 btu AC- ducted wall stat
- CD/ DVD/ Stereo with antenna and 4 ceiling speakers
- 28" LED TV
- Seamless fiberglass on ceiling and walls
- Linoleum on floor in office & front storage
- Rubber coin floor in mud room
- Cherry colour cabinets and trim
- Solid drawer fronts with deluxe ball bearing guides
- 2 base drawers with 3 drawers each
- 1- filing cabinet with 2 drawers
- Jiffy sofa in black vinyl
- Overhead cabinet above jiffy sofa
- 2- office chairs
- 4- large coat hooks in closet
- Restroom with non-power roof vent

